

ShipWeight

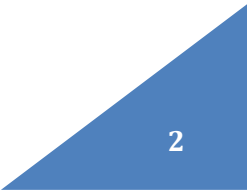
Technical Upgrade Information

Version 9.0

October 2009

CONTENTS

- General Information about upgrading from version 8.0 to 9.0 3
- Installation of ShipWeight version 9.0 on the client machine 4
- Updating the hardware lock..... 5
 - To Check if Update of the Dongle is Required 5
 - To Update the Dongle with an Update Code 6
- Update of the project databases..... 7
- Update of the System Databases 8



GENERAL INFORMATION ABOUT UPGRADING FROM VERSION 8.0 TO 9.0

ShipWeight 9.0 can be installed and run side by side with version 8.0. To remove version 8.0 from the client machine, it must be uninstalled as a separate operation through Windows Control Panel->Add/Remove programs.

To upgrade to version 9.0 the following tasks must be executed:

- Installation of ShipWeight version 8.0 on the client machine
- Update of the hardware lock
- Update of the project databases
- Update of system databases

These tasks are described below.

Note: Even after the upgrade of the databases to version 9.0, ShipWeight 8.0 can still open and run on these databases.

INSTALLATION OF SHIPWEIGHT VERSION 9.0 ON THE CLIENT MACHINE

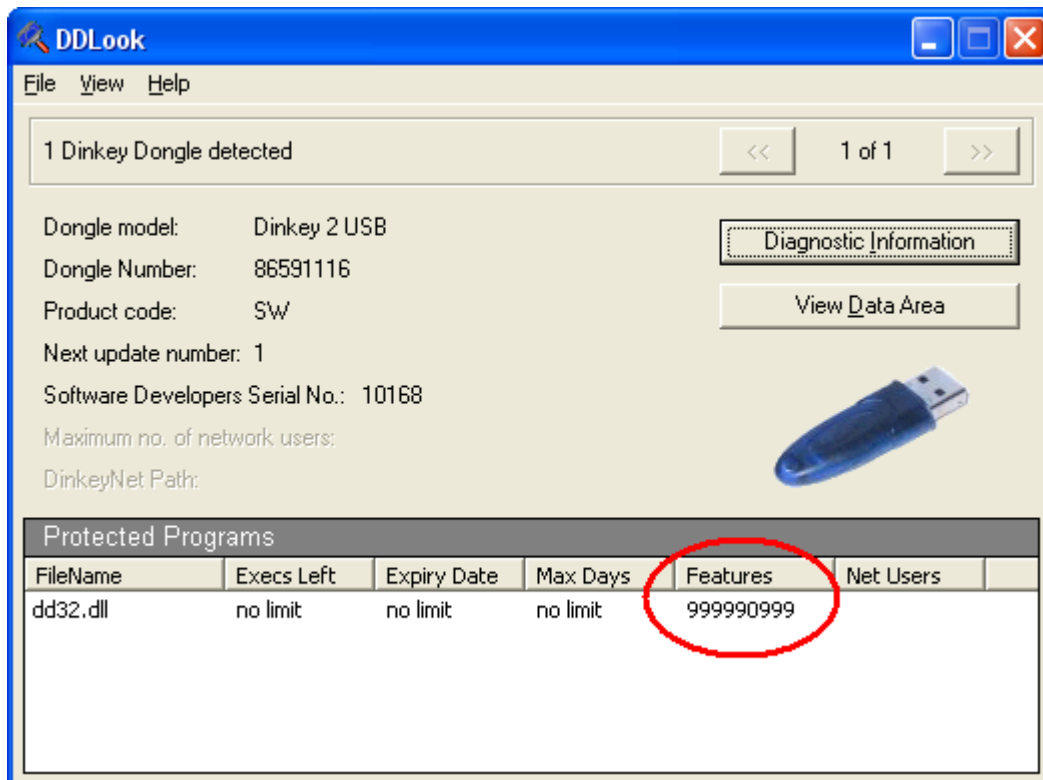
To install version 9.0 on the client machine, run setup.exe from the “Client Installation” folder on the ShipWeight 9.0 CD-ROM or download and extract client_installation.zip from ftp <ftp://ftp.bas.no> or from web <http://ftp.bas.no> - apply username SW90 and password SW90 when logging on.

Follow the installation instructions in the “Installation Guidance” document to be found on the ShipWeight 9.0 CD-ROM, or from the file please_do_read_me_files.zip to be found on the ftp or web as described above.

UPDATING THE HARDWARE LOCK

TO CHECK IF UPDATE OF THE DONGLE IS REQUIRED

Depending on when ShipWeight was acquired, you may need to update your ShipWeight hardware lock. To check if this is needed, run the file DDLOOK.EXE on the machine that holds the lock and check the features number (marked red) in the pop-up window as shown below:



If the three last digits of the features number are 999 then you do not need an update of your hardware dongle.

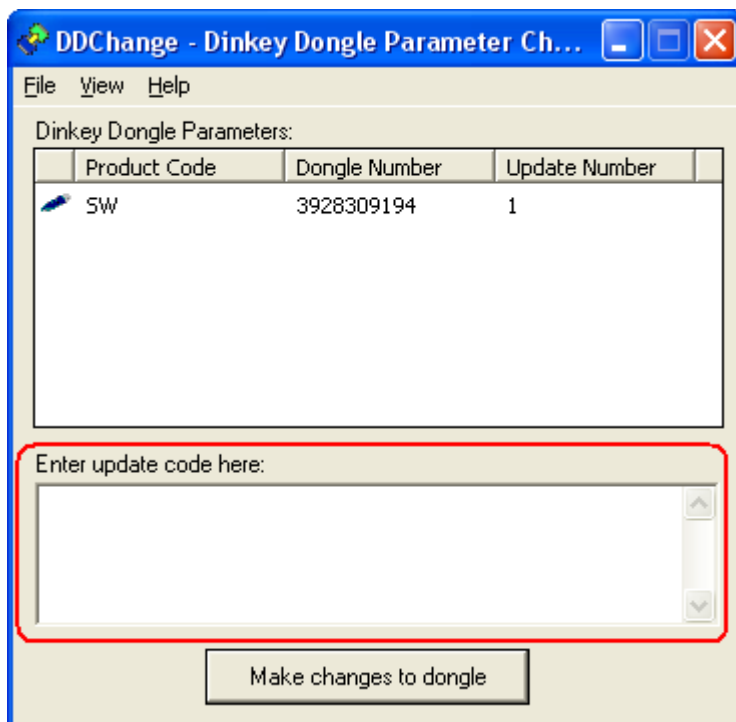
If the three last digits of the features number are 899 or less, then please send a screenshot of the ddlook screen (or write down dongle number and next update number) and send to office@bas.no to receive an update code – if such update code has not already been supplied to you.

The DDLOOK.EXE file can be found in the ShipWeight folder on the client machine, in the "Lock Files" folder on the CD, or download the file and extract lock_files.zip from ftp <ftp://ftp.bas.no> or from web <http://ftp.bas.no> - apply username SW90 and password SW90 when logging on.

TO UPDATE THE DONGLE WITH AN UPDATE CODE

To update the dongle with an update code is done by running DDCHANGE.EXE. The DDCHANGE.EXE file can be found in the ShipWeight folder on the client machine, in the "Lock Files" folder on the CD, or download the file and extract lock_files.zip from ftp <ftp://ftp.bas.no> or from web <http://ftp.bas.no> - apply username SW90 and password SW90 when logging on.

Type the update code exactly as given in the field shown below (marked with a red frame). Next, click the "Make changes to dongle" button. A confirmation code will be given to indicate a successful update.

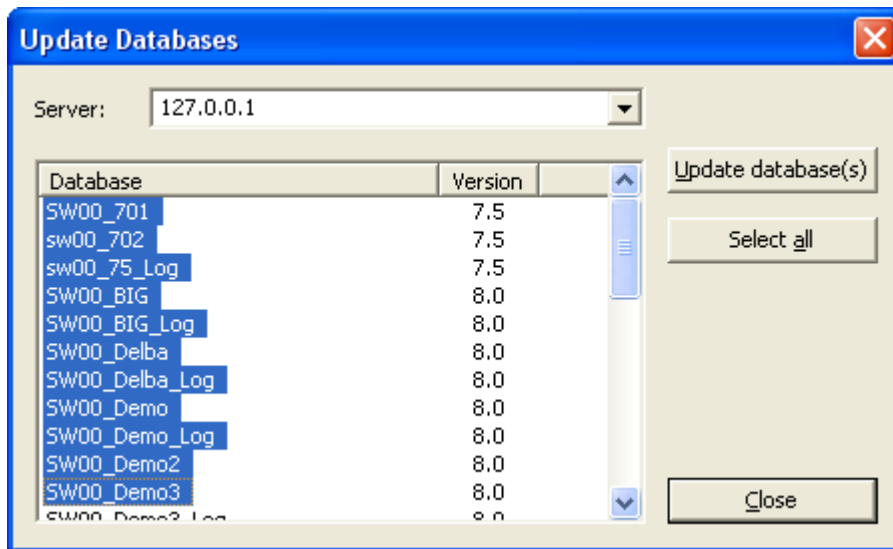


UPDATE OF THE PROJECT DATABASES

The project databases can easily be updated from within ShipWeight.

After starting ShipWeight version 9.0, in the ShipWeight main window, select the menu item *Project->Import->Update 7.x/8.0 databases* to open up the Update Databases dialog. This dialog will list all databases not updated to 9.0.

To update the databases, simply select the databases you want to update by selecting them from the list with the mouse (or click “Select all” button to automatically select all) and click the “Update database(s)” button to start updating. Please allow a few minutes for the update to finish. When the selected databases are updated they will be removed from the list in dialog.



If you do not want to automatically update the project databases from within ShipWeight you may find scripts needed for a manual update in the ShipWeight folder on the client machine (ShipWeightUpdateDB_80to90.sql and ShipWeightUpdateDB_80to90_Log.sql) or you may send a request for them to office@bas.no.

Note: Even after the upgrade of the project databases to version 9.0, ShipWeight 8.0 can still open and run these databases.

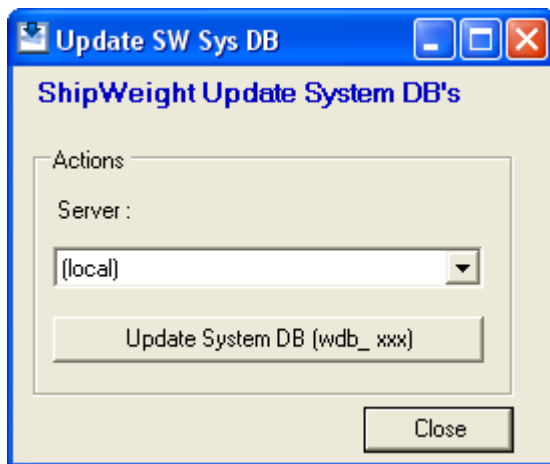
UPDATE OF THE SYSTEM DATABASES

The update of the ShipWeight system database will perform an exchange of the CONVERT_UNIT table in the wdb_ databases. The new table will increase the accuracy of the conversion between English/US units and metric units from 7 to 14 digits.

To update, copy the folder “Upgrade Sys DB from 8.0 to 9.0” from the ShipWeight 9.0 CD to the database server or download the file and extract Upgrade_Sys_DB_from_80_to_90.zip from <ftp://ftp.bas.no> or from web <http://ftp.bas.no> (- apply username SW90 and password SW90 when logging on) to the database server.

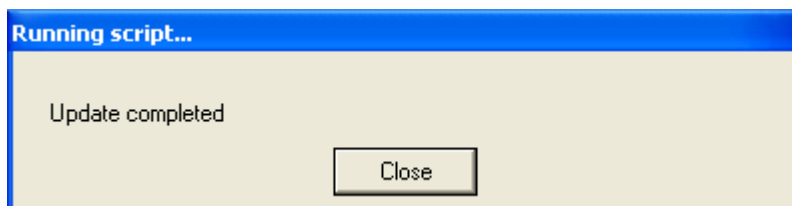
Once the folder and its content are copied to the database server, run “Update Sys DB from 80 to 90.exe” from this folder.

The executable should launch a windows dialog as shown below.



Select correct server instance from the droplist and click the button “Update ... ” to perform the update.

A message box will pop up to show the status of the update. After a few seconds, “Update completed should be shown. Close the status box, and close the update window.



You are done! (See notes on next page).

Technical Update Info, ShipWeight version 9.0...

Note 1: This program requires Microsoft .NET framework to be installed on the server. If not installed, please download and install this from Microsoft website, or contact BAS Engineering.

Note 2: Even after the upgrade of the system databases to version 9.0, ShipWeight 8.0 can still open and run these databases.

Note 3: The script file that is run by this program is to be found on in the folder named UpdateWDB.sql, for inspection or to run the script manually.